



20/20

VISION

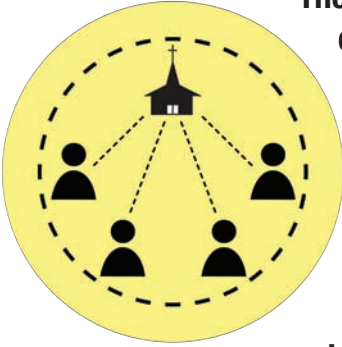
SENT TO SERVE

Synod Ministry Resource Book
Sent Strategy Committee



Metropolitan New York Synod
Evangelical Lutheran Church in America
God's work. Our hands.

SENT STRATEGY



The objective of the Sent Strategy is to network congregations, ministries, and leaders to proclaim the Gospel while responding to specific societal needs and issues.

“By God’s grace for the sake of the world, we will proclaim the good news of God in Christ through word and deed, serve all people following the example of our Lord Jesus, and strive for justice and peace in the world.”

The Sent Committee

The Rev. Marsh Drege and Barbara A. Johnson, *Chairs*

The Rev. Albert Ahlstrom

The Rev. Linda Bell

The Rev. Perucy Butiku, *synod staff*

Deacon Eric Faret

The Rev. John Flack

Deacon Ingrid Compton

Sarah Gioe, *synod staff*

The Rev. James Sudbrock

With special thanks to Astrid Sipos for her invaluable work on interpreting the data and Amy Finney for her assistance in compiling information.

In February 2014, a survey was sent to all congregations in our synod to find out what sorts of outreach ministries are happening; herein are the results. We are thrilled with the response rate, but must make a disclaimer that these results are self-reported and therefore not completely definitive. A portion of the churches did not respond to the survey, and there is still some individual interpretation of the questions. This is the first time such a survey was attempted and there is a learning curve. Thank you to all who responded for convincing us anew that there is a lot of good outreach taking place in our synod's congregations!

INTRODUCTION

The Sent Committee takes the call to see our neighbor seriously. In John 9:7, Jesus said to the man blind from birth: “Go, wash in the pool of Siloam’ (which means Sent). Then he went and washed and came back able to see.” In Matthew 25, the question is raised: “Lord, when was it that we **saw** you hungry and gave you food, or thirsty and gave you something to drink? And when was it that we **saw** you a stranger and welcomed you, or naked and gave you clothing? And when was it that we **saw** you sick or in prison and visited you? And the king will answer them, ‘Truly I tell you, just as you did it to one of the least of these who are members of my family, you did it to me.’”

Sent Strategy Ministries Survey: February 2014

133 out of 194 congregations completed the survey (68%)

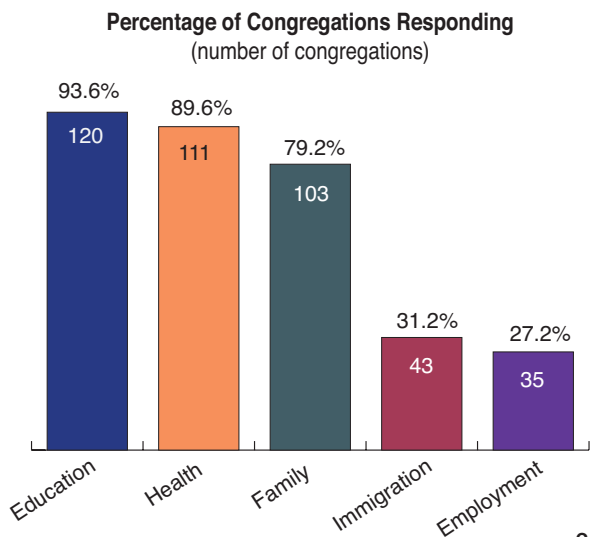
The Sent Committee has been encouraged to partner with synodical congregations by collecting information on various outreach ministries that address the needs of the neighbor. To ably “see” the needs of these neighbors, we have been charged with putting on, especially, five “lenses” that will help us focus on major issues: **Education, Health, Family, Employment, and Immigration.**

An inspiration for this project came by way of Deacon Richard Thyden's diakonia internship project in 2005, whereby he compiled a handbook of successful and faithful outreach activities in Nassau and Suffolk counties. We are indebted to him for his work.

We hope you'll find this booklet more than helpful; we hope you'll find it inspiring! Not only will you be inspired by all the people that are served daily and weekly right here in our own synod, but most likely you'll be further inspired to say “we can **see** doing that in our congregation.”

To find out more about the specific ministries listed in this booklet, contact the congregations for further information. Better yet, partner with those congregations to multiply and magnify the ministry!

For further information and an up-to-date version of this booklet, visit www.mnys.org.





EDUCATION

The educational offerings below are the complete listing of schools throughout our synod (not just the congregations that responded to our survey).

PRESCHOOL

Abiding Presence Lutheran Church Preschool
Abiding Presence, Fort Salonga, 631-269-6454

Anchor Nursery School
Hope, Selden, 631-732-2511

Ascension Pre-School
Ascension, Deer Park, 631-667-4188

Astoria Lutheran School
Grace, Astoria, 718-728-0093

Augustana Preschool
Augustana, East Elmhurst, 718-728-1199

Bethlehem Nursery School
Bethlehem, North Baldwin, 516-223-3400

Bright Horizons Preschool
Christ, Floral Park, 516-775-9669

Christian Pre-School
Dobbs Ferry, Dobbs Ferry, 914-693-0810

Creative Playtime Nursery School
Grace, Scarsdale, 914-472-4252

Cross of Christ Preschool
Cross of Christ, Babylon, 631-661-7245

Eltingville Lutheran School
Eltingville, Staten Island, 718-984-8830

Epiphany Lutheran School
Epiphany, Brooklyn, 718-773-7200

Faith Lutheran Preschool
Faith, Syosset, 516-921-3330

Gloria Dei Nursery and Pre-K
Gloria Dei, New Hyde Park, 516-354-6956

Gloria Dei Nursery-Preschool
Gloria Dei, Huntington Station, 631-271-2466

Good Shepherd Creative Play
Good Shepherd, Pearl River, 845-735-2243

Good Shepherd Lutheran School
Good Shepherd, Plainview, 516-349-1966

Grace Lutheran Play School
Grace, Uniondale, 516-489-2182

Grace Lutheran Pre School
Grace, Bellmore, 516-785-5029

Grace Pre-School and Grace Day School
Grace, Malverne, 516-599-6626

Holy Trinity Early Childhood Center
Holy Trinity, Rockville Centre, 516-766-2815

Joyful Noise Christian Preschool
Ascension, Franklin Square, 516-352-1263

Joyful Noise Nursery Program
Saint John, Bellmore, 516-785-4331

Leif Ericson Day School
Brooklyn, 718-748-9023

Little Blessings Children's Center
Resurrection, Mount Kisco, 914-666-5123

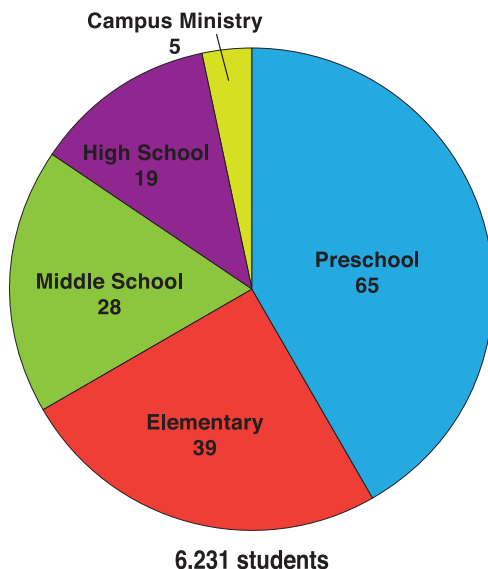
Little Lights Christian Preschool
Christ, East Northport, 631-499-4655

Little Saints Preschool of St. Andrew's
St. Andrew's, West Hempstead, 516-483-8650

Little Sprouts Pre-school
Christ, New Hyde Park, 516-746-4889

EDUCATION

Number of congregations reporting both external and internal (Sunday School) programs



EDUCATION



20/20 FOCUS: LONG ISLAND LUTHERAN DAY SCHOOL

Long Island Lutheran Day School (LuDay for short) is further proof that our merciful Savior promises to bring light from darkness and life from death.

St. Paul's Lutheran Church, East Northport began St. Paul's Day School in 1970. In the mid- to late 2000s, the church and school fell upon some

difficult times, spiritually and financially. But, with a rich heritage and a strong relationship with Long Island Lutheran Middle and High School (LuHi), the leadership of St. Paul's did not want to see quality Christian education in the greater Northport area come to an end. In an act of courage, humility, and faith, the leadership of St. Paul's and LuHi entered into an innovative partnership. In 2010, St. Paul's Lutheran School became LuDay. As a result, Long Island Lutheran expanded its education offerings to children from preschool to 12th grade.

The first three years of this endeavor were so successful that now St. Paul's and LuDay have entered into a thirty-year partnership. The need for strong, stable, quality Christian education on the north shore of western Suffolk County grows increasingly apparent each day. Moving forward, LuDay will seek to have a strong Christian witness, while addressing many of the concerns that have recently arisen in public education regarding the core curriculum and standardized testing. This excellent education is further enhanced by regular outreach projects, such as participating in food-packing events and writing letters to our veterans.

Long Island Lutheran Day School
East Northport, 631-754-4424

Lutheran Elementary School of Bay Ridge
Bethlehem, Brooklyn, 718-748-9502

Ms. Elena's Sunshine Early Learning Center
First, Throggs Neck, Bronx, 718-829-0650

Noah's Ark Preschool
Holy Cross, Lake Ronkonkoma, 631-588-9509

Our Redeemer Nursery School and Day Care
Our Redeemer, Seaford, 516-781-6374

Our Saviour Lutheran Preschool
Our Saviour, Jamaica, 718-739-7452

Our Saviour's Lutheran Preschool
Our Saviour's, Brooklyn, 718-745-0020

Pleasantville Hill Nursery School
Emanuel, Pleasantville, 914-769-1559

Rainbow Christian Preschool & Kindergarten
St. Jacobus, Woodside, 718-335-3361

Redeemer Lutheran Church & Nursery School
Redeemer, Queens Village, 718-468-8868



EDUCATION

Saint Luke's Academy Preschool

St. Luke's, Brooklyn, 510-926-2310

St. Andrew's Cooperative Nursery School

St. Andrew's, Smithtown, 631-265-2288

St. David's Christian Preschool

St. David's, Massapequa Park, 516-799-7832

St. John's Christian Junior Kindergarten

St. John's, Poughkeepsie, 845-452-1550

St. John's Early Childhood Center

St. John's, Merrick, 516-379-3858

St. John's Lutheran Nursery School

St. John's, Lindenhurst, 631-226-1274

St. Luke's Early Childhood Education Center

St. Luke's, Farmingdale, 516-249-1220

St. Luke's Nursery School

St. Luke's, Woodhaven, 718-296-6683

St. Paul's Child Care Center

St. Paul's, Rye Brook, 914-939-8170

St. Paul's Christian Day School

St. Paul's, New City, 845-634-5574

St. Peter's Early Learning Center

St. Peter's, Baldwin, 516-223-1951

St. Peter's Nursery Preschool

St. Peter's, Huntington Station, 631-423-1013

St. Stephen's Nursery School

St. Stephen's, Hicksville, 516-931-0710

The Christian Nursery School of Christ Lutheran Church

Christ, Wantagh, 516-221-3286

Trinity Lutheran Nursery School

Trinity, Rocky Point, 631-744-9355

Universal Pre-K

Atonement, Jackson Heights, 718-639-6074

Universal Pre-K; Saint John's Private School

St. John's, Richmond Hill, 718-849-1437

Village Nursery School

Our Redeemer, Chappaqua, 914-238-8144

Zion Lutheran Preschool

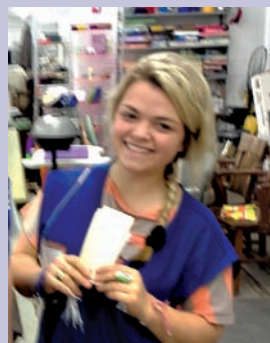
Zion, Staten Island, 718-981-3151

20/20 FOCUS: THE STUDENT CHRISTIAN CENTER AT NEW PALTZ

The campus ministry at the State University in New Paltz is managed by a board from Lutheran, Methodist, and Reformed congregations in the village with major funding from the ELCA, the Metro New York Synod, and local congregations.

The Student Christian Center (SCC) has engaged and equipped countless students and faculty in Word and Sacrament ministry, Bible studies, worship, and weekly meals (some in area churches) with peer ministers and local lay volunteers. Students have a long-time involvement with local soup kitchens, the Ulster County unit of Habitat for Humanity, and the area "ReStore" that sells used furniture and household items for the benefit of Habitat.

Now, a new direction is to expand the SCC's constituency to the nearby county community college as a community-building effort, since many of those students complete their education at the university. The Rev. Diana Smith, campus pastor, has become the "go-to" person at SUNY-New Paltz whenever a religious leader is needed for campus events or in times of crisis.



EDUCATION

ELEMENTARY

- Eltingville Lutheran School
Eltingville, Staten Island, 718-984-8830
- Grace Pre-School and Grace Day School
Grace, Malverne, 516-599-6626
- Leif Ericson Day School
Brooklyn, 718-748-9023
- Long Island Lutheran Day School
East Northport, 631-754-4424
- Lutheran Elementary School of Bay Ridge
Bethlehem, Brooklyn, 718-748-9502

MIDDLE SCHOOL

- Eltingville Lutheran School
Eltingville, Staten Island, 718-984-8830
- Leif Ericson Day School
Brooklyn, 718-748-9023
- Long Island Lutheran Middle & High School
Brookville, 516-626-1700
- Lutheran Elementary School of Bay Ridge
Bethlehem, Brooklyn, 718-748-9502
- Martin Luther Middle & High School
Maspath, 718-894-4000

HIGH SCHOOL

- Long Island Lutheran Middle & High School
Brookville, 516-626-1700
- Martin Luther Middle & High School
Maspath, 718-894-4000

CAMPUS MINISTRY

- Advent, Manhattan, 212-665-2504
Redeemer, New Paltz, 845-255-0051

AFTERSCHOOL PROGRAMS

- Atonement, Jackson Heights, 718-639-6074
Bethlehem, Baldwin, 516-223-3400
Christ/Cristo, Freeport, 516-378-1258
New Hope, Valley Stream, 516-285-9782
St. Jacobus, Woodside, 718-424-2307
St. Paul's, Bronx, 718-822-4535

Our synod SEES those in need

10,000 people a day are helped by Lutheran Social Services of New York

22,448 seafarers a year are visited

275,000-300,000 people fed per year

5,295 counseling sessions have been provided by Lutheran Counseling Center (852 for Hurricane Sandy victims)

470 visits were made to The Healing Center in Brooklyn for domestic violence assistance



- Transfiguration, Bronx, 718-378-3588
Trinity, Manhattan, 212-222-7045

OTHER

- Christ, Newburgh, 845-562-0824 (Outdoor education)
Epiphany, Hempstead, 516-481-9344 (Spelling bee)
Hope, Selden, 631-732-2511 (Messy Church and preschool music education)
New York Finnish, Manhattan (Finnish language)
Salam Arabic, Brooklyn, 718-748-4024 (Arabic language classes)
St. Paul's, Bronx, 718-822-4535 (Spanish literacy classes)
St. Paul's, New City, 845-634-5574 (Children's music education)
Trinity, White Plains, 914-761-6038 (Literacy for youth and parents)

In compiling the data, we noticed that many congregations offer Sunday School, adult studies, and women's Bible studies. While we commend these offerings, here we are highlighting educational opportunities that tend to reach out to the neighborhood and surrounding community.



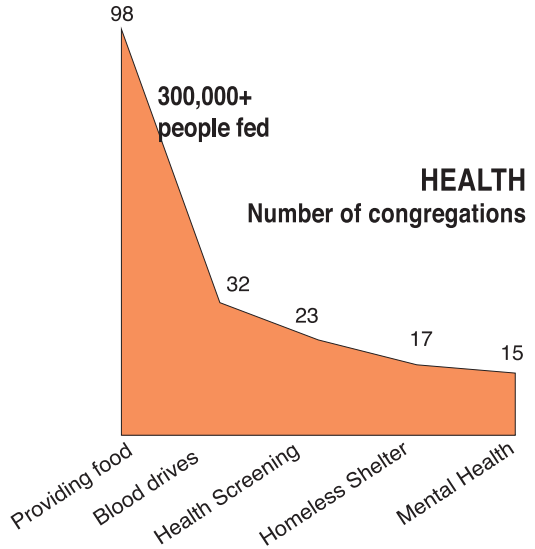
HEALTH

PARISH NURSE

Good Shepherd, Levittown, 516-731-7387
St. John's, Poughkeepsie, 845-452-1550

BLOOD DRIVES

Abiding Presence, Fort Salonga, 631-269-6454
Ascension, Deer Park, 631-667-4188
Christ, East Northport, 631-499-4655
Christ, Islip Terrace, 631-581-1710
Christ, Newburgh, 845-562-0824
Christ, Wantagh, 516-221-3286
Christ/Cristo, Freeport, 516-378-1258
Emanuel, Pleasantville, 914-769-1559
First, Throggs, Neck, Bronx, 718-829-0650
First, Poughkeepsie, 845-452-6050
Gloria Dei, Huntington Station, 631-271-2466
Good Shepherd, Levittown, 516-731-7387
Good Shepherd, Pearl River, 845-735-2243
Good Shepherd, Roosevelt, 516-378-5486
Grace, Yorktown Heights, 914-245-5737
Hope, Selden, 631-732-2511
Our Saviour's, Brooklyn, 718-745-0020
Redeemer, New Paltz, 845-255-0051
Saint Peter's, Manhattan, 212-935-2200
St. Andrew's, Smithtown, 631-265-2288
St. Andrew's, Yorktown Heights, 914-962-9564
St. Barnabas, Howard Beach, 718-843-7028
St. James-St. Matthew's, South Ozone Park, 718-845-8770
St. John's, Lindenhurst, 631-226-1274
St. John's, Poughkeepsie, 845-452-1550
St. Matthew's, White Plains, 914-949-3577
St. Paul's, East Northport, 631-754-4422
St. Paul's in Flatlands, Brooklyn, 718-377-7116
St. Paul's, Rye Brook, 914-939-8170
Trinity, Brewster, 845-279-5181



HEALTH SCREENING/TESTING

Abiding Presence, Bronx, 718-991-9100
Abiding Presence, Fort Salonga, 631-269-6454
Advent, Manhattan, 212-665-2504
Atonement, Jackson Heights, 718-639-6074
Christ/Cristo, Freeport, 516-378-1258
Christ, New Hyde Park, 516-746-4889
Emanuel, Pleasantville, 914-769-1559
Fordham, Bronx, 718-367-8330
Good Shepherd, Brooklyn, 718-745-8520
Good Shepherd, Levittown, 516-731-7387
Good Shepherd, Plainview, 516-349-1966
Good Shepherd, Roosevelt, 516-378-5486
Gustavus Adolphus, Manhattan, 212-674-0739
Holy Redeemer, Brooklyn, 718-272-9300
Hope, Selden, 631-732-2511
King of Kings, New Windsor, 845-565-7645
New Hope, Valley Stream, 516-285-9782
Our Saviour, Jamaica, 718-739-7452
Redeemer, New Paltz, 845-255-0051
Resurrection, St. Albans, 718-454-4044
Saint John, Bellmore, 516-785-4331
Saint Peter's, Manhattan, 212-935-2200
St. James-St. Matthew-Emanuel, Brooklyn
St. Luke's, Manhattan, 212-246-3540
St. Paul's, East Northport, 631-754-4422
St. John's, Poughkeepsie, 845-452-1550
St. Paul's International, Floral Park, 718-347-5990

We SEE our elderly

At Wartburg, over 600 of our elderly are cared for daily through assisted living, memory care, certified homecare, skilled nursing, rehab transitional care, and adult day services.



Wartburg

St. Paul's in Flatlands, Brooklyn, 718-377-7116
Transfiguration, Bronx, 718-378-3588
Trinity Lower East Side, Manhattan,
212-228-5254
Trinity, Manhattan, 212-222-7045
Trinity, Rocky Point, 631-744-9355
Trinity, St. Albans, 718-528-4519

MENTAL HEALTH COUNSELING/REFERRALS

Christ, New Hyde Park, 516-746-4889
Good Shepherd, Brooklyn, 718-745-8520
Good Shepherd, Plainview, 516-349-1966
Good Shepherd, Roosevelt, 516-378-5486
Holy Trinity, Bellerose, 718-347-0278
King of Kings, New Windsor, 845-565-7645
Our Savior, Port Washington, 516-767-0603
Our Savior's, Glen Head, 516-676-4540
Our Saviour, Manhasset, 516-627-2430
St. James-St. Matthew's, South Ozone Park,
718-845-8770
St. Paul's-St. Luke's, Staten Island,
718-442-7224

HOMELESS SHELTERS

Gloria Dei, Huntington Station, 631-271-2466
Holy Cross, Commack, 631-543-6783

Resurrection, Mount Kisco, 914-666-5123
St. John's, Middletown, 631-226-1274
Trinity, Manhattan, 212-222-7045

A good example of partnership in sheltering the homeless is “HiHi”—the Huntington Interfaith Homeless Initiative where several Long Island churches (many of them Lutheran) cooperate and take turns in offering their church buildings and volunteers to care for the homeless.

SOUP KITCHENS / COMMUNITY DINNERS

Abiding Presence, Bronx, 718-991-9100
Advent, Manhattan, 212-665-2504
Atonement, Saugerties, 845-246-8322
Christ, Suffern, 845-562-0824
Christ's, Woodstock, 845-679-2336
Covenant, Ridgewood, 718-821-0233
First, Throgs Neck, Bronx, 718-829-0650
Immanuel, Manhattan, 212-289-8128
Saint Peter's, Manhattan, 212-935-2200
St. Luke's, Manhattan, 212-246-3540
St. John's, Lindenhurst, 631-226-1274
St. John's, Merrick, 516-379-3858
St. Paul's, Liberty, 845-292-4626
St. Paul's, Narrowsburg, 631-473-2236

20/20 FOCUS: DAILY BREAD SOUP KITCHEN

The Daily Bread Soup Kitchen has been serving the hungry Monday, Wednesday, and Friday from 4-6 p.m. in the parish hall of Christ's Lutheran Church in Woodstock for over 20 years. Founded by this small, mission-oriented congregation, the Daily Bread Soup Kitchen is truly a community partnership, bringing together restaurants, faith communities, and service organizations to provide a place for fellowship and an evening meal to those who otherwise would go without one or both of these essential dignities of life. Anywhere from 20 to 60 people per day convene for this meal, usually soup, which is provided by a local restaurant. Bread is contributed by a local grocer.

Other supplies come from the Hudson Valley Regional Food Bank, and local companies offer grants and donations.

Meals are served by volunteers from the congregation and the community. The Daily Bread Soup Kitchen is an example of how a small congregation can have a big impact!





HEALTH

St. Paul's, Port Jefferson Station, 631-473-2236
 St. Paul's, West Camp, 845-246-1064
 Trinity, Long Island City, 718-278-0036
 Trinity Lower East Side, Manhattan
 212-228-5254
 Trinity, Manhattan, 212-222-7045
 Trinity, Rocky Point, 631-744-9355
 Trinity, Staten Island, 718-447-0526
 Trinity, Wyandanch, 631-643-8790

The Interfaith Nutrition Network (INN) is a non-denominational organization that supports soup kitchens and shelters across Long Island including 12 Lutheran churches.

FOOD PANTRY / COLLECT FOOD

Abiding Presence, Bronx, 718-991-9100
 Abiding Presence, Fort Salonga, 631-269-6454
 Advent, Manhattan, 212-665-2504
 Ascension, Deer Park, 631-667-4188
 Atonement, Jackson Heights, 718-639-6074
 Atonement, Saugerties, 845-246-8322
 Bethlehem, Baldwin, 516-223-3400
 Bethlehem, Brooklyn, 718-748-9502
 Calvary, Bronx, 718-652-6719
 Christ, East Northport, 845-562-0824
 Christ, Islip Terrace, 631-581-1710
 Christ, Newburgh, 845-562-0824
 Christ, New Hyde Park, 516-746-4889
 Christ, Wantagh, 845-562-0824

Christ/Cristo, Freeport, 516-378-1258
 Covenant, Ridgewood, 718-821-0233
 Dobbs Ferry, Dobbs Ferry, 914-693-0810
 Emanuel, Pleasantville, 914-769-1559
 Epiphany, Hempstead, 516-481-9344
 First, Poughkeepsie, 845-452-6050
 Gloria Dei, Huntington Station, 631-271-2466
 Good Shepherd, Levittown, 845-735-2243
 Good Shepherd, Pearl River, 845-735-2243
 Good Shepherd, Plainview, 845-735-2243
 Good Shepherd, Roosevelt, 718-745-8520
 Grace, Astoria, 718-728-0093
 Grace, Forest Hills, 516-599-6626
 Grace, Uniondale, 516-599-6626
 Grace, Yorktown Heights, 914-245-5737
 Grace & St. Paul's, Manhattan, 212-877-5810
 Gustavus Adolphus, Manhattan, 212-674-0739
 Holy Cross, Commack, 631-543-6783
 Holy Trinity, Bellerose, 212-877-6815
 Holy Trinity, Rockville Centre, 516-766-2815
 Hope, Selden, 631-732-2511
 Immanuel, Manhattan, 212-289-8128
 Kalam, Roslyn, 516-233-5273
 King of Kings, New Windsor, 845-565-7645
 Messiah, Staten Island, 718-356-1050
 New Hope, Valley Stream, 516-285-9782
 Our Savior, Patchogue, 631-475-5725
 Our Savior, Port Washington, 516-767-0603
 Our Savior's, Glen Head, 516-676-4540
 Our Saviour, Jamaica, 718-739-7452
 Our Saviour, Manhasset, 516-627-2430
 Our Saviour's Atonement, Manhattan,
 212-923-5757
 Redeemer, Flushing, 718-358-2744
 Redeemer, New Paltz, 845-255-0051
 Redeemer, Queens Village, 718-468-8868
 Resurrection, Mount Kisco, 914-666-5123
 Resurrection, St. Albans, 718-454-4044
 Saint John, Bellmore, 516-785-4331
 Salam Arabic, Brooklyn, 718-748-4024
 St. Andrew's, Smithtown, 631-265-2288
 St. Andrew's, Yorktown Heights, 914-962-9564
 St. Barnabas, Howard Beach, 718-843-7028
 St. David's, Massapequa Park, 516-799-7832
 St. Jacobus, Woodside, 718-424-2307
 St. James-St. Matthew's, South Ozone Park,
 718-845-8770
 St. John-St. Matthew-Emanuel, Brooklyn,
 718-768-0528
 St. John's, Lindenhurst, 631-226-1274

Lutheran HealthCare, Brooklyn

Lives touched: 182,347
Charity care: \$62,000,000
Emergency care: 69,451

Outpatient visits: 41% Latino,
38% Chinese, 10% Orthodox Jew,
7% Arabic

23% of all patients fall below the
poverty line



20/20 FOCUS: ATONEMENT, SAUGERTIES, IS SENT TO GIVE BREAD

Atonement Lutheran Church in Saugerties has been celebrating Thanksgiving for over 25 years.

Their community God-Given Bread program began out of a destructive arson-fire in the church in 1988, when the congregation wanted to give thanks for their recovery and new life. It started small, once a week, with enthusiastic and good cooks. While the congregation had an existing food pantry, this hot-lunch program drew not only a growing constituency of guests, but a cadre of neighboring congregations to help: United Methodist, Reformed, Roman Catholic, Jewish, and another ELCA partner (St. Paul's, West Camp).

Since the area has low population density, there are usually 15 to 20 guests, mainly seniors, single mothers, and disabled, unemployed, and homeless persons. The guests are “prayed over,” according to Pastor Edward Schreiber, who says God-Given Bread is an umbrella name for the way God gives food to many people in many ways.

In 2013, God-Given Bread luncheons on Tuesdays and Thursdays provided meals for 2,703 people, and the food pantry helped 10,664 people. Atonement has been sent into the world with care and nourishment, with grace and friendship.

St. John's, Lynbrook, 631-226-1274
St. John's, Mamaroneck, 845-452-1550
St. John's, Merrick, 516-379-3858
St. John's, Middletown, 631-226-1274
St. John's, Poughkeepsie, 845-452-1550
St. Paul's, Bronx, 718-822-4535
St. Paul's, East Northport, 631-754-4422
St. Paul's, Liberty, 845-292-4626
St. Paul's, Narrowsburg, 631-473-2236
St. Paul's, New City, 845-634-5574
St. Paul's, Rye Brook, 914-939-8170
St. Paul's International, Floral Park,
718-347-5990
St. Paul's-St. Luke's, Staten Island,
718-442-7224
St. Peter's, Port Jervis, 845-856-1033
St. Stephen's, Brooklyn, 718-462-3225
St. Stephen's, Hicksville, 516-931-0710
Transfiguration, Bronx, 718-378-3588
Transfiguration, Manhattan, 212-722-0601
Trinity, Brewster, 845-279-5181
Trinity, Long Island City, 718-278-0036
Trinity Lower East Side, Manhattan,
212-228-5254
Trinity, Kingston, 845-338-2954

The Lutheran Care Network



Serving:
280 in skilled nursing

**701 in senior
apartments**

50 in Adult Day Care

Trinity, Rocky Point, 631-744-9355
Trinity, Wyandanch, 631-643-8790
United, Mount Vernon, 914-513-5326

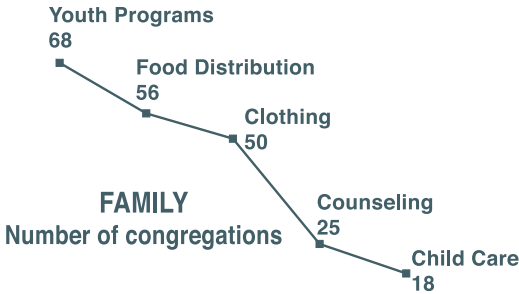
OTHER

St. Paul's, New City, 845-634-5574 (Outreach to poor families, sick and homebound)

In compiling the data, we noticed that many congregations are hosting several variations of 12-step programs (AA) within their congregations. While we commend this hospitality, we found them too numerous to mention.



FAMILY



Family programs are offered by 103 congregations. The most popular are youth programs, reported by 72 congregations. In compiling the data, we noticed that a lot of congregations host Boy Scouts, Girl Scouts, and related programs. While we commend these offerings, we do not list all of the congregations that offer scouting programs, since they are so numerous.

SENIOR CENTERS

- Bethlehem, Brooklyn, 718-748-9502
- First, Poughkeepsie, 845-452-6050
- Saint Peter's, Manhattan, 212-935-2200
- St. John-St. Matthew-Emanuel, Brooklyn, 718-768-0528

MENTAL HEALTH COUNSELING/REFERRALS

- Christ, New Hyde Park, 516-746-4889
- Good Shepherd, Brooklyn, 718-745-8520
- Good Shepherd, Plainview, 516-349-1966
- Good Shepherd, Roosevelt, 516-378-5486
- Holy Trinity, Bellerose, 718-347-0278
- King of Kings, New Windsor, 845-565-7645
- Our Savior, Port Washington, 516-767-0603
- Our Savior's, Glen Head, 516-676-4540
- Our Saviour, Manhasset, 516-627-2430
- St. James-St. Matthew's, South Ozone Park, 718-845-8770
- St. Luke's, Manhattan, 212-246-3540
- St. Paul's-St. Luke's, Staten Island, 718-442-7224

PRISON MINISTRY

- Emanuel, Pleasantville, 914-769-1559
- Our Savior, Patchogue, 631-475-572
- Resurrection, Mount Kisco, 914-666-5123

CLOTHING DONATIONS

- Abiding Presence, Bronx, 718-991-9100
- Abiding Presence, Fort Salonga, 631-269-6454
- Ascension, Deer Park, 631-667-4188
- Ascension, Franklin Square, 631-667-4188
- Atonement, Saugerties, 845-246-8322
- Calvary, Bronx, 718-652-6719
- Christ, Islip Terrace, 631-581-1710
- Christ, Newburgh, 845-562-0824
- Covenant, Ridgewood, 718-821-0233
- Epiphany, Hempstead, 516-481-9344
- Good Shepherd, Roosevelt, 718-745-8520
- Grace, Uniondale, 516-599-6626
- Holy Trinity, Bellerose, 212-877-6815
- Holy Trinity, Manhattan, 212-877-6815
- Holy Trinity, Rockville Centre, 516-766-2815
- Hope, Selden, 631-732-2511
- King of Kings, New Windsor, 845-565-7645
- New Hope, Valley Stream, 516-285-9782
- Our Redeemer, Seafood, 516-781-6374
- Our Savior, Patchogue, 631-475-5725
- Our Savior, Port Washington, 516-767-0603
- Our Savior's, Glen Head, 516-676-4540
- Our Saviour, Manhasset, 516-627-2430
- Resurrection, St. Albans, 718-454-4044
- Saint John, Bellmore, 516-785-4331
- Saint Peter's, Manhattan, 212-935-2200
- St. Andrew's, Smithtown, 631-265-2288
- St. Barnabas, Howard Beach, 718-843-7028
- St. David's, Massapequa Park, 516-799-7832
- St. James-St. Matthew's, South Ozone Park, 718-845-8770
- St. John's, Poughkeepsie, 845-452-1550

Our synod SEES those in need

7,215 were served through arts opportunities

7,418 were housed in homeless shelters

8,574 were assisted through clothing distribution

2,114 received legal assistance



20/20 FOCUS: WARM WELCOMES ON WEDNESDAYS

It was 18 years ago that a young client asked Merritt Rose, "Would you bring me to church?" Rose was working for his county's Association for Retarded Citizens, and that simple request turned into a thriving shared ministry at Redeemer Lutheran Church in Kingston.



Congregational leaders developed a simplified weekly service for people with disabilities. Five or six individuals began to attend each Wednesday morning, with Rose providing transportation. Over the years, buses and vans from day centers and local group homes started to arrive regularly. Now 30-70 people worship each week. Worshippers vary in their abilities. Many are nonverbal. Some are blind, some are wheelchair-bound, some have behavioral issues across a wide spectrum.

The leadership grew as well. Currently, nine ecumenical clergy, a deacon, and a lay person serve on a rotating basis. The 30-minute service includes candle-lighting, a reading, prayer, songs, and a benediction. Initially, pastors weren't sure about preaching. Now they usually give a brief reflection on the text, emulating children's sermons to make the message understandable to as many as possible.

Pianists and music leaders lend their time to the service. The leaders encourage participation by choosing music that's easy to follow and handing out rhythm instruments to accompany the songs. Hands down, the group's favorite song is "Jesus Loves Me."

The Wednesday congregation gets involved in other ways too. Everybody wants to light the candles! Worship leaders take prayer requests before the service. "So often they want to pray for the staff, family, and caregivers. It's very touching," says Deacon Elke Hekler, coordinator. Redeemer provides juice and cookies for the popular snack times before the service, while volunteers from Redeemer and sister congregation, Trinity, prepare and serve sandwiches every week.

Volunteers agree that the best part of the service is sharing the message that you are a child of God. Even if it can't be verbally stated, "these people really like to come," notes Rose. "Each one of them is a part of the body of Christ," adds Hekler. "It is a wonderful thing to see that acceptance can make a difference."



FAMILY

St. John's, Lynbrook, 631-226-1274
St. John's, Merrick, 516-379-3858
St. Luke's, Manhattan, 212-246-3540
St. Paul's, East Northport, 631-754-4422
St. Paul's, Liberty, 845-292-4626
St. Paul's, West Camp, 845-246-1064
St. Stephen's, Brooklyn, 718-462-3225
St. Stephen's, Hicksville, 516-931-0710
Third, Rhinebeck, 845-876-4471
Trinity Lower East Side, Manhattan,
212-228-5254
Trinity, Rocky Point, 631-744-9355
Zion-St. Mark's, Manhattan, 212-288-0600

OTHER

King of Kings, New Windsor, 845-565-7645
(Tax preparation assistance)
Redeemer, Kingston, 845-338-8930 (Low-
income housing)

St. Paul's, New City, 845-634-5574 (Parenting
support group)
Saint Peter's, Manhattan, 212-935-2200
(Psychotherapist on staff)
St. Peter's, Baldwin, 516-223-1951 (Drop and
Shop for parents)

Bereavement support

Covenant, Ridgewood, 718-821-0233
Good Shepherd, Plainview, 516-349-1966
Saint John, Bellmore, 516-785-4331

Community organizing

St. Paul's, Rye Brook, 914-939-8170
Good Shepherd, Brooklyn, 718-745-8520

Stephen Ministry

Abiding Presence, Fort Salonga, 631-269-6454
Ascension, Franklin Square, 631-667-4188
King of Kings, New Windsor, 845-565-7645

20/20 FOCUS: REACHING THE COMMUNITY THROUGH ART

When Our Saviour's Atonement (OSA) in Manhattan invited the community into the church to share stories about grace, they didn't know if anyone would come. But, people walked through the doors and brought their stories of grace with them. They left with even more stories and perhaps a deeper understanding of what God's grace means. The congregation learned that the community responds to invitations, and it was energized by the chance to offer hospitality.

OSA reached the community by holding an art show. They saw a need in the neighborhood: people want to artistically express their spirituality, but lack a comfortable place to do so. In 2013, OSA started the Creations Art Show, a series of annual shows based on themes—such as grace and mercy—that reflect our Christian faith but are chosen to be welcoming to all people.

The first event drew 67 submissions (including live performances by two musicians) by 36 professional and amateur artists, ranging from atheists, seekers, lapsed church-goers, to Jewish friends and Christians of different denominations. Over 150 additional people attended the show during open hours and receptions.

"We found that we are able to gather people not by asking them to listen to us, but by offering to listen to them through their artwork," said OSA members. Many who attended or participated in the art show might not think that Jesus has any relevance for them, but it's possible that through art, hospitality, and experience, they will feel Jesus' love, presence, and grace.

EMPLOYMENT COUNSELING

Ascension, Franklin Square, 631-667-4188
Good Shepherd, Brooklyn, 718-745-8520
King of Kings, New Windsor, 845-565-7645
Our Savior's, Glen Head, 516-676-4540
Saint Peter's, Manhattan, 212-935-2200
Seafarers & International House, Manhattan, 212-677-4800
St. John's, Lindenhurst, 631-226-1274
St. Paul's International, Floral Park, 718-347-5990
Trinity, Wyandanch, 631-643-8790

OTHER

Fordham, Bronx, 718-367-8330 (Vamos Unidos assists immigrants in obtaining street vendor licenses)

20/20 FOCUS: VOLUNTEER CALL

Lutheran Social Services of New York is now the second largest Head Start program in the city, after launching 10 Early Life Centers with 1,705 preschool students this year. This venture is a great opportunity to connect congregational members with many program needs: volunteers can serve as classroom aids, work in the main office, tutor students, read with students, or assist with arts and crafts. In addition, LSS's New Life School, with 200 high school students, seeks volunteers to share skills. Could members of your congregation help New Life students learn crafts, landscaping abilities, or even barbershop/beauty shop techniques? Would your congregation like to collaborate with LSS to host a preschool in your church next year? Contact cconnell@lssny.org to help.



Koinonia

Served 150 camping and retreat groups, as well as 2,996 guests in 2013

20/20 FOCUS: EXECUTIVES NETWORK FOR JOBS

These days, the best way to get a job is to network. For executives, studies show that "help wanted" ads regularly receive over a thousand resumes and 85% of such jobs are filled through networking.

Having been a consultant for over 10 years, Jeff Peterson found himself in transition in 2011. Seeing the need for networking opportunities, Peterson partnered with Lutheran Men in Mission in 2012 to form Long Island Senior Executives Networking Group (LI-SENG), a place for business leaders to share job leads, connections, and networking events.

LI-SENG has developed a process that advises, supports, and helps executives stay accountable to their job search. Around 20 people attend each meeting, usually including 2-3 new members. The group gives them a jump start on their search and helps them understand that now they need to take their talents and motivation and apply them to their "new job" of finding a job.

In the past two years, over 200 people have come through the group. "Most have found work and all have become friends," says Peterson.



IMMIGRATION

IMMIGRATION COUNSELING

Good Shepherd, Brooklyn, 718-745-8520
Good Shepherd, Levittown, 845-735-2243
King of Kings, New Windsor, 845-565-7645
St. Paul's International, Floral Park,
718-347-5990

LATINO/HISPANIC MINISTRY

Ascension, Deer Park, 631-667-4188
Advent, Manhattan, 212-665-2504
Christ/Cristo, Freeport, 516-378-1258
Fordham, Bronx, 718-367-8330
Good Shepherd, Plainview, 516-349-1966
Our Savior, Port Washington, 516-767-0603
San Lucas, Woodhaven, 718-296-7272
Sión/Saint Peter's, Manhattan, 212-935-2200
St. John's by the Sea, Long Beach, 516-432-7771
St. Paul's, Rye Brook, 914-939-8170
Trinity, Manhattan, 212-222-7045

Trinity, White Plains, 914-761-6038
Trinity, Wyandanch, 631-643-8454

OTHER

Advent, Manhattan, 212-665-2504 (Immigration clinics for undocumented persons)
Christ, Manhattan, 212-475-5906 (Christmas satchels for seafarers)
Emanuel, Pleasantville, 914-769-1559 (Neighbor's Link)
First, Poughkeepsie, 845-452-6050 (Skills training for Chinese immigrants)
Gustavus Adolphus, Manhattan, 212-674-0739 (Detention center visitation)
Good Shepherd, Brooklyn, 718-745-8520 (New York Sanctuary Coalition)
Sión/Saint Peter's, Manhattan, 212-935-2200 (Nuestro Refugio immigration reform group)
St. Paul's, Rye Brook, 914-939-8170 (Latino Immigration Reform)

20/20 FOCUS: VISITS TO IMMIGRANT DETENTION CENTERS

The detained immigrant ran across the room and threw open his arms in gratitude to Pastor Chris Mielowski of Gustavus Adolphus Lutheran Church in Manhattan. "This means so much to me that you are here again. You have no idea how much it lifts my spirits." The immigrant has been incarcerated for over eight months, has not been able to see his eight-year old daughter, has had few visitors and even less hope about when or if he might be released. After a second visit with this asylum seeker, Pastor Mielowski reminded him that he is held in the prayers of the church. The asylum seeker responded, "If I get out of here, I would like to visit your church and give thanks."

Taking seriously the call in Matthew 25 to visit those who are in prison, Gustavus Adolphus has sent over 18 visitors, trained by Seafarers & International House's social work intern, to detention centers to connect with those who have been detained due to immigration violations or because they are seeking asylum from persecution in their home countries.

"The visitations open our eyes and widen our world," explains Pastor Mielowski. "Now when we hear about immigration reform on the news or read about the plight of asylum seekers, we no longer think of these individuals as a concept. Those are stories that we became a part of."



SUMMARY

Going forth to care

The Metropolitan New York Synod Sent Strategy Committee conducted a survey in February 2014 to identify the ministries currently provided by our various congregations, in order to enable us to develop and share ministries throughout our synod. We know that this list isn't exhaustive, but nevertheless, the study is convincing. Metro New York Synod is definitely **sent**: sending forth mission-minded folks who are seeing the needs of those around us and responding to those who are the “least of these” members of God's family.

As you've seen in this resource, the survey showed:

- We feed a LOT of people
- We educate a LOT of youth
- We can learn how to better serve unemployed persons and immigrants

Now we're going to find ways for congregations to partner together to multiply their efforts in ministries of Education, Health, Family, Employment, and Immigration.

In the survey, we also asked congregations for the most critical issues facing their communities. The following illustrates the results:



We invite your congregation to continue to see the needs in your community and address those needs by leveraging existing resources in your neighborhood. Our next project is to retain a congregation-based community organizer to synthesize these findings.



APPENDIX

For a complete list of Metro New York Synod congregations, visit www.mnys.org/find_a_church/. Find contact information for every parish, as well as an interactive map.

Lutheran Services New York Alliance

Lutheran Social Services of New York: www.lssny.org

Wartburg: www.wartburg.org

Seafarers & International House: www.sihnyc.org

NYU Lutheran: www.lutheranhealthcare.org

The Healing Center: www.thehealingcenterny.org

Lutheran Counseling Center: www.lccny.org

Eger Lutheran Home and Services: www.eger.org

Clinical Pastoral Education (CPE): lsnya-cpe.org

Lutheran Services New York Alliance

LSNYA-sponsored CPE trained 32 students last year in pastoral care as they served at Lutheran Social Services of New York, Seafarers & International House, Lutheran Healthcare, Eger Nursing Home, and Wartburg Adult Care.



Other vital Metro New York Synod ministries with which to partner

Airport chaplaincy at JFK Airport's Christ For the World Chapel

Koinonia: www.koinoniany.org

Lutheran Ministries in Higher Education

Lutheran Schools Association: www.lsanys.org

The Lutheran Care Network: www.tlcn.org

The Stewardship & Mission Support Table's Synod-wide Service Days





**Jesus said to them again, "Peace be with you.
As the Father has sent me, so I send you."**

John 20:21